

THE WINKLE OF THE HARBOUR

1. RULES

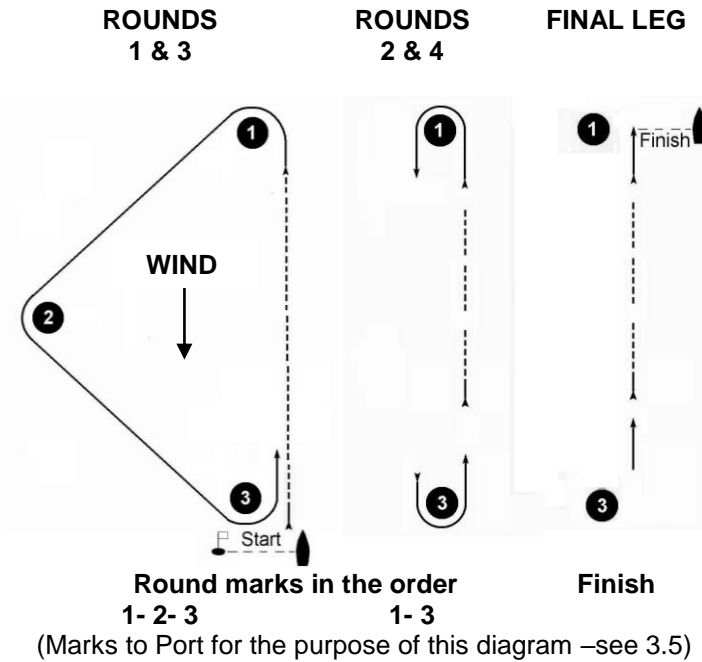
- 1.1. The 'rules' as defined in the Racing Rules of Sailing shall apply.
- 1.2. A change to these Sailing Instructions or Notice of Race shall be posted on the Club Notice board in the club foyer one hour before the start.

2. RACE TIME AND CLASS SIGNAL

- 2.1 The time of warning signal shall be **11.55**
- 2.2 The Class Flag shall be Numeral Pendant 9.

3. COURSES

- 3.1 Courses shall consist of a number of rounds (see 3.2) followed by a final leg to the finish line.
- 3.2 **The number of rounds** to be sailed shall be displayed on a board on the committee boat.
- 3.3 Laid orange marks shall be used for Marks 1, 2 and 3.
- 3.4 **Course configuration**



- 3.5 Marks 1, 2, & 3 shall be rounded to PORT when a RED flag, and STARBOARD when a GREEN flag, is flown from the committee boat.

SAILING INSTRUCTIONS 26TH DECEMBER 2018

4. SHORTENED COURSE (amending RRS 32)

- 4.1 Boats shall round the mark at which the course is shortened and sail to the finish line, except
- 4.1.1 when a blue flag is flown below Code Flag S, boats shall finish at the mark.

5. STARTING AND FINISHING

- 5.1 **The starting line** shall be between the mast of the committee boat and a dan buoy, each flying an orange flag.
- 5.2 **The finishing line** shall be between the mast of the committee boat flying an orange flag and mark 1.

6. PROTESTS

Protests shall be lodged within 30 minutes of the protesting boat's finish.

MENGEHAM RYTHE SAILING CLUB

The Winkle of the Harbour

NOTICE OF RACE

Wednesday 26th December 2018

12.00 Start in Chichester Harbour area of Pilsley Sands

High Tide: 13.56

Ht: 4.9m

ENTRIES will be taken from MRSC & HISC from 11am

1. ORGANISING AUTHORITY & RULES

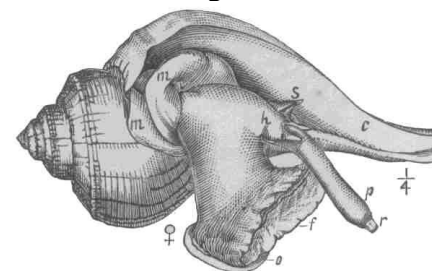
- 1.1 The Organising Authority is MRSC ("the Club") and this term includes its officers, the sailing committee, the race officers and assistants, the patrol boat crews and any other person involved in running the event.
- 1.2 The 'rules' as defined in the Racing Rules of Sailing (RRS) shall apply.

2. CONDITIONS OF ENTRY

- 2.1 Competitors are required to agree to be bound by the 'rules' thereby accepting that they participate at their own risk (RRS 4). By racing they agree to this condition and specifically acknowledge that:
 - a) they are aware of the inherent element of risk involved in dinghy racing and of their responsibility for the exposure of themselves and the boat to such risk and for the safety of the same whilst afloat;
 - b) they are responsible for any injury, damage or loss caused by their actions or omissions, and have valid third-party liability insurance with minimum cover of £2m;
 - c) their boat is fit, and its crew competent, to sail in the conditions likely to be encountered;
 - d) the provision of a race management team and patrol boats does not relieve them of their responsibilities and patrol boat cover is limited to such assistance, particularly in extreme weather conditions, as can be practicably provided in the circumstances.
 - 2.2 The parent or guardian of any helm under 18 must complete an entry form before the race.
 - 2.3 Open to boats with PY of 1390 & below (no multi-hulls allowed).
- 3. HANDICAPS:** local MRSC handicaps based on PY numbers shall apply.
- 4. DONATION:** £5 (to the Friends of Hayling Rescue).

MENGEHAM RYTHE SAILING CLUB

The Winkle of the Harbour



Winkle, p. 2340.

Wednesday 26th December 2018

RETIREMENTS SHOULD BE REPORTED TO A PATROL BOAT OR THE RACE OFFICE AS SOON AS POSSIBLE

Commodore:

Joanna Lewis

Sailing Secretary:

Graeme Macdonald

Race Officer:

Ian Frayne

Honorary Membership is extended to competitors and their families after racing.

Refreshments will be provided for competitors after racing.